



WorkSpace Help Contents

For more information using Help, press F1.

[What is WorkSpace](#)

[How To...](#)

[Menu Commands](#)

[Registering WorkSpace](#)

[Uninstalling WorkSpace](#)



What is WorkSpace

WorkSpace is a group application launcher. Application groups are made up of individual programs that are commonly used together. For example, a group can be created to load a spreadsheet, a calculator, and a graphing program together. The layout of a group can be automatically arranged by loading applications in one of four modes: normal, minimized, maximized, or with a specified location and size.

Groups can be launched from WorkSpace's button bar or by a command line argument. Using the later method, an icon for a particular group can be made in the Program Manager by passing WorkSpace's button bar.

Please send any comments, suggestions, or bugs to:

CompuServe: 71043,3352

American On-Line: BeelzeBob

Internet: BeelzeBob@aol.com

Mail: John Wu, 1740 DeAnza Ct., San Luis Obispo, CA 93405

THIS PACKAGE (CONSISTING OF THE WORKSPACE SOFTWARE AND ASSOCIATED DOCUMENTATION) IS PROVIDED "AS IS" WITHOUT REPRESENTATION OR WARRANTY OF ANY KIND, EITHER EXPRESS OR IMPLIED, INCLUDING WITHOUT LIMITATION, ANY REPRESENTATIONS OR ENDORSEMENTS REGARDING THE USE OF, THE RESULTS OF, OR PERFORMANCE OF; ITS APPROPRIATENESS, ACCURACY, RELIABILITY, OR CURRENTNESS. THE ENTIRE RISK AS TO THE USE OF THIS PACKAGE IS ASSUMED BY THE USER. IN NO EVENT WILL JOHN WU BE LIABLE FOR ANY DAMAGES, DIRECT, INDIRECT, INCIDENTAL OR CONSEQUENTIAL, RESULTING FROM ANY DEFECT IN THE PACKAGE, EVEN IF JOHN WU HAS BEEN ADVISED OF THE POSSIBILITY OF SUCH DAMAGES. ANY AND ALL USE OF THIS PACKAGE, FOR ANY PURPOSE, WITH NO REGARD TO THE LEGALITY OF SUCH USE OR PURPOSE, IS THE COMPLETE AND SOLE RESPONSIBILITY OF THE USER. ALL TERMS ARE SUBJECT TO CHANGE WITHOUT NOTICE. THIS DISCLAIMER SHALL SUPERSEDE ANY VERBAL OR WRITTEN STATEMENT TO THE CONTRARY. SHOULD ANY PART OR PARTS OF THIS DISCLAIMER BE DEEMED UNLAWFUL, THE REMAINDER SHALL STILL APPLY. IF YOU DO NOT ACCEPT THESE TERMS YOU MUST CEASE AND DESIST USING THIS PACKAGE IMMEDIATELY.

THIS PACKAGE IS ©1992 BY JOHN WU. IT IS BEING OFFERED AS SHAREWARE. YOU MAY DISTRIBUTE THIS EVALUATION VERSION FREELY.

How To...

[Launch a Group from Button Bar](#)

[Launch a Group Using Command Line](#)

[Create or Modify a Group](#)

[Add or Edit a Program to a Group](#)

[Set an Application's Size & Location](#)

How to Launch a Group from Button Bar



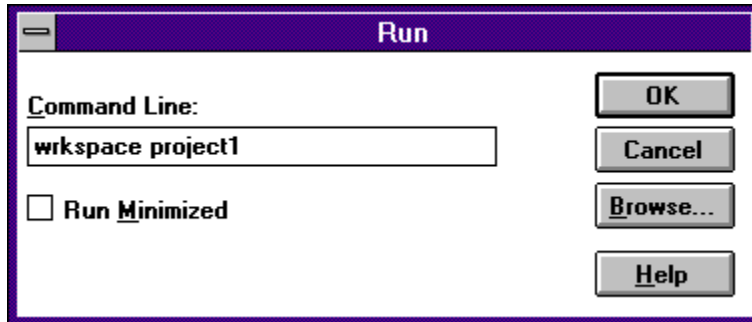
When WorkSpace is loaded, a button bar is displayed with buttons for all groups. Clicking the button of a group will launch the specified program group.

Also See:

[How to Launch Group Using Command Line](#)

[How to Create or Modify a Group](#)

How to Launch a Group Using Command Line



From the Program Manager's Run dialog box (or other equivalent Windows command line), run WorkSpace with a command line argument specifying the group to launch. The format is: **[path]workspace [group name]**. If *.wsp files are associated to WorkSpace, just the filename of the group can be used.

To add a WorkSpace group icon to the Program Manager, use the New command from the File menu to create a new Program Manager item. In the command line, type in the format specified above.

Also See:

[How to Launch a Group from Button Bar](#)

[How to Create or Modify a Group](#)

Create or Modify a Group



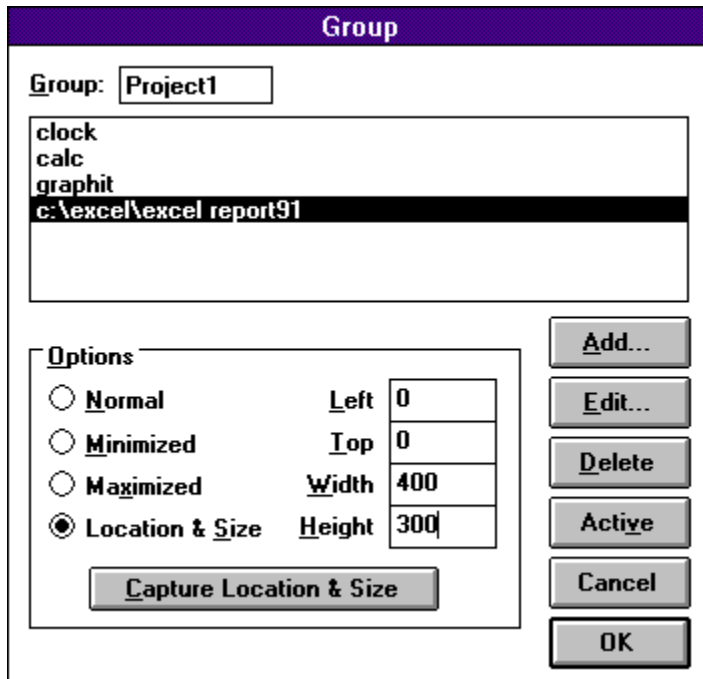
Select Edit Groups from the Options menu to display the Edit Group dialog box. From this dialog box, groups can be manipulated, deleted, created, or modified. The box on the left displays a list of the group names. The buttons on the right are actions that can be performed on a group. The functions of these buttons are listed in the table below:

Button	Function
New...	Defines a new group.
Edit...	Allows editing of group name and program items within a group. A group must be selected from the group list.
To Top	Moves the selected group to the top of the list. The order of the groups will also be reflected in the button bar. Use this button to rearrange the order of the groups.
Delete	Deletes the selected group.
OK	Exits the Edit Group dialog box and returns to button bar.

Also See:

[Add or Edit a Program to a Group](#)

Add or Edit a Program to a Group



Clicking the New... or Edit... button from the Edit Group dialog box calls the Edit Item dialog box. From this dialog box, the group name can be changed and program items can be modified, added, or deleted.

The options box is used to set the state of the program when loaded. Programs can be loaded normal, minimized, maximized, or with location and size specified. The Capture Location & Size button is used to automatically input the size and location of the program rather typing these parameters into the input boxes.

The following table lists the functions of the buttons:

Button	Function
Add...	Adds a new program item to group. User must specify the command line entry for the program. Command line arguments can be added.
Edit...	Allows the user to edit the selected program item's command line. Command line arguments can be added.
Delete	Deletes the selected program item.
Active	Makes the selected item the active application. When the group is loaded this application will become active. The application on the bottom of the list is always the active application.
Cancel	Cancels all modifications to group.
OK	Exits dialog box.

Note: When specifying the command line for program items, the format is: **filename [arguments]**. For example, *notepad readme.txt* can be used to display a "readme" text file. A browse button is available to find a file.

Also See:

[How to Create or Modify a Group](#)

[Set an Application's Size & Location](#)

How to Set an Application's Size & Location

Capture Location & Size

The Location & Size of an application can be set by one or two methods. The top, left, width and height parameters can be typed into the input boxes. Or, these parameters can be automatically captured with the Capture Location & Size button. This button is enabled when the Location & Size option is selected. The steps to capture the location and size follows:

1. Position the location and size of any application to the desired setting. The application need not be the application to be loaded.
2. Click the Capture Location & Size button. WorkSpace will minimize and the mouse pointer will turn into a cross-hair.
3. Move the mouse pointer over the application. The window of the application will become highlighted.
4. Click the left mouse button when the desire application becomes highlighted. The location and size of the application will automatically be inputted into the input boxes.

Note: The units used for the location and size is pixels.

Also See:

[Add or Edit a Program to a Group](#)

Menu Commands

Menu	Menu Command	Function
File	Edit Groups...	Calls the <u>Edit Group</u> dialog box.
	Minimize On Use	WorkSpace minimizes when a group is launched.
	Exit On Use	WorkSpace exits when a group is launched.
	Register...	Use to enter registration code.
	Exit	Exits WorkSpace.
Help	Contents	Calls this help file
	About	Program information

Registering WorkSpace

WorkSpace is offered as Shareware. You may use WorkSpace for a 30 day evaluation period. After which this program must be registered for continued use. The registration fee is a mere \$7.00. Upon registering WorkSpace, you will immediately receive a registered version. Free updates are provided to registered users electronically. The cost of the disk, postage and handling must be charged to receive updates through mail.

To receive a registered copy of WorkSpace, please fill out the form included in the *workspace.txt* file. Send the form along with a check or money order for \$7.00 to:

John Wu
BoneHead Software
1740 DeAnza Ct.
San Luis Obispo, CA 93405

Make checks payable to John Wu.

Option Box

Contain options buttons to set state of application. Available states are Normal, Minimized, Maximized, and Location & Size.

Uninstalling WorkSpace

To uninstall WorkSpace, delete the following files:

In the WorkSpace directory:

workspace.exe	The program itself.
workspace.hlp	Help file for WorkSpace.
workspace.ini	The WorkSpace init file.
*.wsp	Any WorkSpace group files
workspace.txt	WorkSpace information text file.